



## ADELAIDE 24

# House & Land Package



**\$724,620\***

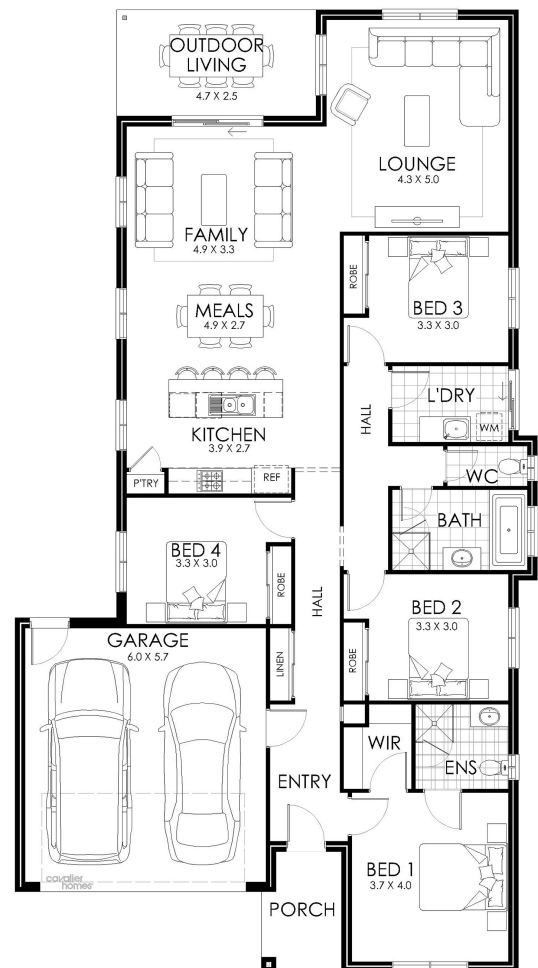
Lot 2 Ashley Close Leneva

Lot Size: 581.26m<sup>2</sup>

House Size: 227.43m<sup>2</sup>

List of Inclusions:

- Lifestyle Plus inclusions
- Colorbond steel roof
- Ducted reverse cycle heating & cooling
- 900mm stainless steel appliances
- Vinyl planks, carpet & tiles throughout
- Site Cost allowance
- Lighting and window covering value pack included
- Driveway and crossover allowance
- Sought after estate
- Additional living area



**cavalier  
homes**<sup>®</sup>  
REAL HOMES.. REAL PEOPLE.

**Find Out More**

Contact: Jess Ottey  
0499566008

\*All prices, images, inclusions and plans shown in this document and any Display Home vary throughout Australia and over time and are provided as a guide only. Unless otherwise stated in writing, new home prices do not include furniture, decorator items, driveways, paths, landscaping, swimming pools, letterboxes, fencing, security systems, vacuum systems, telephone, intercom and communication systems, air conditioning, heating systems and or connection fees. All Cavalier Homes designs are copyright. None of the information provided in this brochure forms part of any contract with Cavalier Homes and you should not rely upon any information contained in this brochure in deciding whether to enter into any contract with Cavalier Homes. Please refer to the particulars of your Contract for the specific design and details of any inclusions. Package reference number 54784768807. Cavalier Homes Albury-Wodonga is a registered building practitioner number CDB-U 48509 (VIC) 184744C (NSW).