



ASHFIELD 34

House & Land Package

4  2  2 

\$835,500*

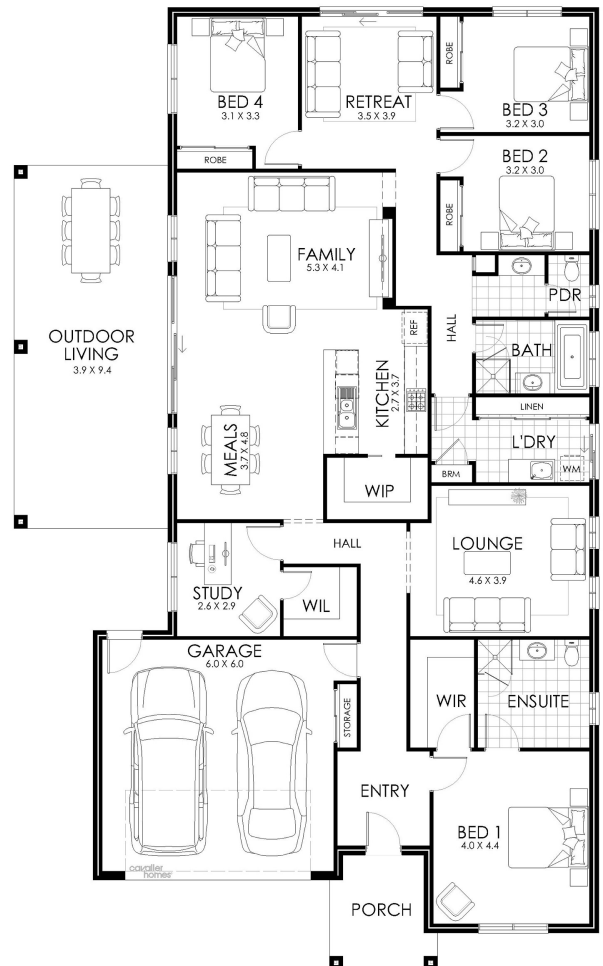
Lot 26 Duke Court Shepparton North

Lot Size: 2095m²

House Size: 315.02m²

List of Inclusions:

- Lifestyle inclusions
- Colorbond steel roof
- Gas Ducted Heating & Evaporative Cooling
- 600mm stainless steel appliances
- Carpet & tiles throughout
- Site Cost allowance
- Haymes 3 coat paint system
- Driveway and crossover allowance
- Open plan living
- *Pricing includes standard facade only



**cavalier
homes**[®]
REAL HOMES.. REAL PEOPLE.

Find Out More

Contact: Taylah Smith
0499 915 197

*All prices, images, inclusions and plans shown in this document and any Display Home vary throughout Australia and over time and are provided as a guide only. Unless otherwise stated in writing, new home prices do not include furniture, decorator items, driveways, paths, landscaping, swimming pools, letterboxes, fencing, security systems, vacuum systems, telephone, intercom and communication systems, air conditioning, heating systems and or connection fees. All Cavalier Homes designs are copyright. None of the information provided in this brochure forms part of any contract with Cavalier Homes and you should not rely upon any information contained in this brochure in deciding whether to enter into any contract with Cavalier Homes. Please refer to the particulars of your Contract for the specific design and details of any inclusions. Package reference number 57320136102. Cavalier Homes Goulburn Valley is a registered building practitioner number CDB-U 51879 (VIC) 318535C (NSW).