



## ASHLEY 21

# House & Land Package



**\$632,270\***

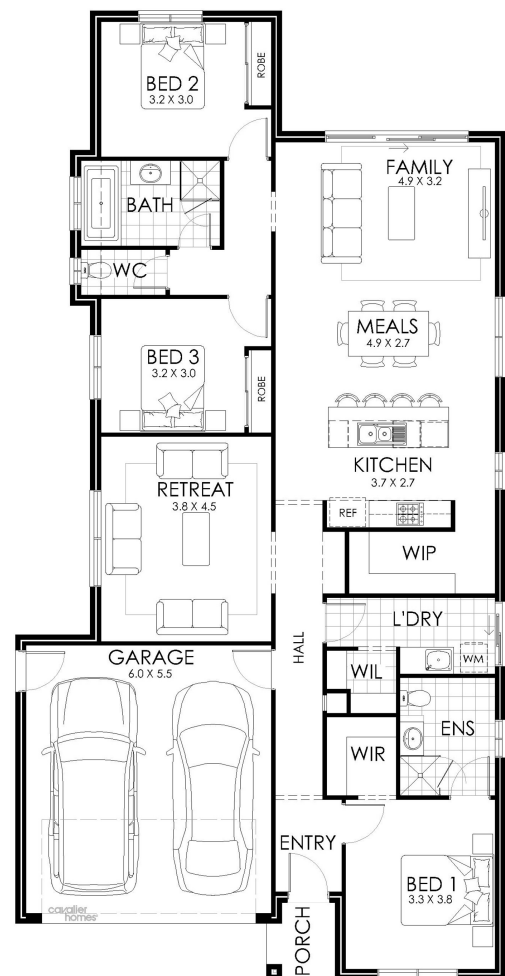
Lot 4 Melaleuca St Buronga

Lot Size: 914m<sup>2</sup>

House Size: 196.45m<sup>2</sup>

List of Inclusions:

- Lifestyle inclusions
- Colorbond steel roof
- Ducted Heating & Cooling
- 600mm stainless steel appliances
- Vinyl plank flooring to living areas
- Earthworks for site fall of up to 300mm.
- Customisable upgrade options available
- Haymes 3 coat paint system
- \*Pricing includes standard facade only
- Located close to schools and popular shopping destinations



**cavalier  
homes**<sup>®</sup>  
REAL HOMES.. REAL PEOPLE.

Find Out More

Contact: Stephen Bates

0427 120 769

\*All prices, images, inclusions and plans shown in this document and any Display Home vary throughout Australia and over time and are provided as a guide only. Unless otherwise stated in writing, new home prices do not include furniture, decorator items, driveways, paths, landscaping, swimming pools, letterboxes, fencing, security systems, vacuum systems, telephone, intercom and communication systems, air conditioning, heating systems and or connection fees. All Cavalier Homes designs are copyright. None of the information provided in this brochure forms part of any contract with Cavalier Homes and you should not rely upon any information contained in this brochure in deciding whether to enter into any contract with Cavalier Homes. Please refer to the particulars of your Contract for the specific design and details of any inclusions. Package reference number 53650786349. Cavalier Homes Mildura is a registered building practitioner number CDB-U 64767 (VIC) 126181C (NSW).