



ASHLEY 22A

House & Land Package



\$601,410*

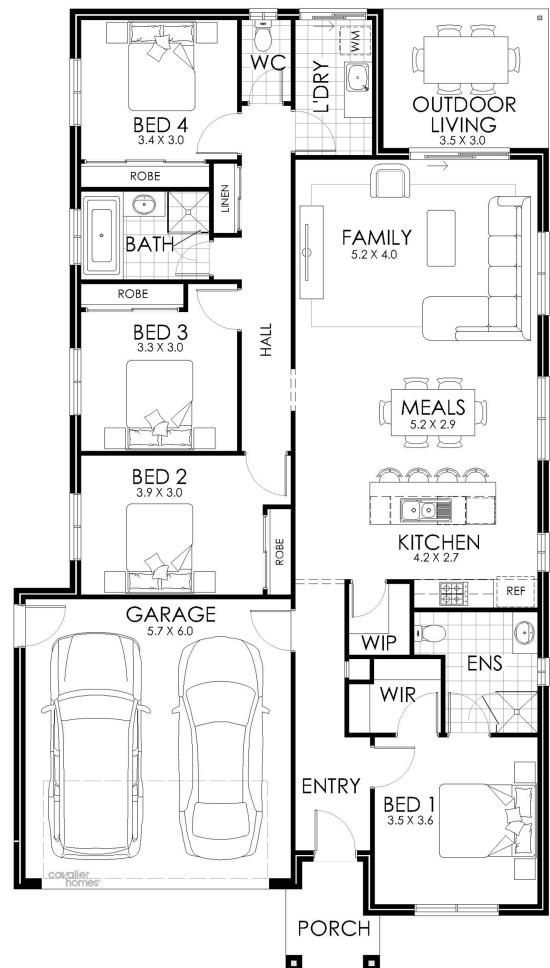
Lot 10 Honeyeater Way
Maryborough

Lot Size: 1269m²

House Size: 207.91m²

List of Inclusions:

- Aspire inclusions
- Colorbond steel roof
- Ducted reverse cycle heating & cooling
- Quality Westinghouse appliances
- Quality floor coverings
- Site Cost allowance
- Solar PV system PV Solar system with inverter
- Brick over all window/door openings
- Outdoor living area
- Generous sized block



**cavalier
homes**[®]
REAL HOMES.. REAL PEOPLE.

Find Out More

Contact: Syrah Peterson
0439 234 350

*All prices, images, inclusions and plans shown in this document and any Display Home vary throughout Australia and over time and are provided as a guide only. Unless otherwise stated in writing, new home prices do not include furniture, decorator items, driveways, paths, landscaping, swimming pools, letterboxes, fencing, security systems, vacuum systems, telephone, intercom and communication systems, air conditioning, heating systems and or connection fees. All Cavalier Homes designs are copyright. None of the information provided in this brochure forms part of any contract with Cavalier Homes and you should not rely upon any information contained in this brochure in deciding whether to enter into any contract with Cavalier Homes. Please refer to the particulars of your Contract for the specific design and details of any inclusions. Package reference number 43756216490. Cavalier Homes Bendigo is a registered building practitioner number CDB-U 50034 (VIC).