



## ASHLEY 22A

# House & Land Package



**\$843,093\***

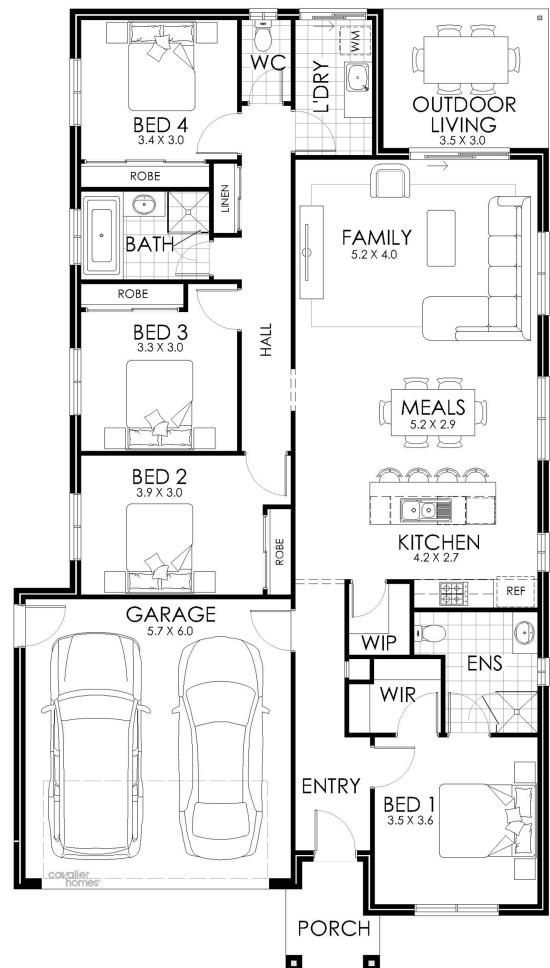
Lot 1326 Wildflower Circuit  
Bellbird

Lot Size: 450m<sup>2</sup>

House Size: 207.91m<sup>2</sup>

### List of Inclusions:

- Lifestyle inclusions
- Colorbond steel roof
- Ducted Heating & Cooling
- 600mm stainless steel appliances
- Quality floor coverings
- Site Cost allowance
- Customisable upgrade options available
- Driveway and crossover allowance
- Outdoor living area
- \*Pricing includes standard facade only



**cavalier  
homes**<sup>®</sup>  
REAL HOMES.. REAL PEOPLE.

**Find Out More**

Contact Ben Heaft  
0477 745 158

\*All prices, images, inclusions and plans shown in this document and any Display Home vary throughout Australia and over time and are provided as a guide only. Unless otherwise stated in writing, new home prices do not include furniture, decorator items, driveways, paths, landscaping, swimming pools, letterboxes, fencing, security systems, vacuum systems, telephone, intercom and communication systems, air conditioning, heating systems and or connection fees. All Cavalier Homes designs are copyright. None of the information provided in this brochure forms part of any contract with Cavalier Homes and you should not rely upon any information contained in this brochure in deciding whether to enter into any contract with Cavalier Homes. Please refer to the particulars of your Contract for the specific design and details of any inclusions. Package reference number 51181353122. Cavalier Homes Greater Newcastle is a registered building practitioner number 334818C (NSW).