



## ASHLEY 22A

# House & Land Package



**\$605,417\***

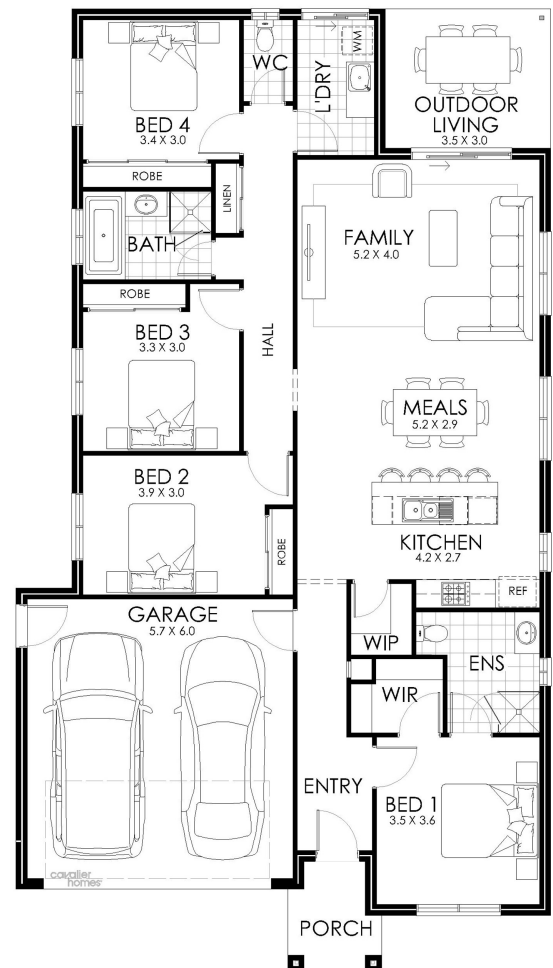
Lot 18 Acacia Court  
Bridgewater

Lot Size: 1156m<sup>2</sup>

House Size: 207.91m<sup>2</sup>

### List of Inclusions:

- Aspire inclusions
- Colorbond steel roof
- Reverse cycle split system
- Quality Westinghouse appliances
- Quality floor coverings
- Site Cost allowance
- Quality fittings and fixtures
- Remote Garage Door
- Sought after location
- Energy efficient appliances



**cavalier  
homes**<sup>®</sup>  
REAL HOMES.. REAL PEOPLE.

**Find Out More**  
Contact: Syrah Peterson  
0439 234 350

\*All prices, images, inclusions and plans shown in this document and any Display Home vary throughout Australia and over time and are provided as a guide only. Unless otherwise stated in writing, new home prices do not include furniture, decorator items, driveways, paths, landscaping, swimming pools, letterboxes, fencing, security systems, vacuum systems, telephone, intercom and communication systems, air conditioning, heating systems and or connection fees. All Cavalier Homes designs are copyright. None of the information provided in this brochure forms part of any contract with Cavalier Homes and you should not rely upon any information contained in this brochure in deciding whether to enter into any contract with Cavalier Homes. Please refer to the particulars of your Contract for the specific design and details of any inclusions. Package reference number 35157943662. Cavalier Homes Bendigo is a registered building practitioner number CDB-U 50034 (VIC).