



ASHLEY 22A

House & Land Package



\$549,780*

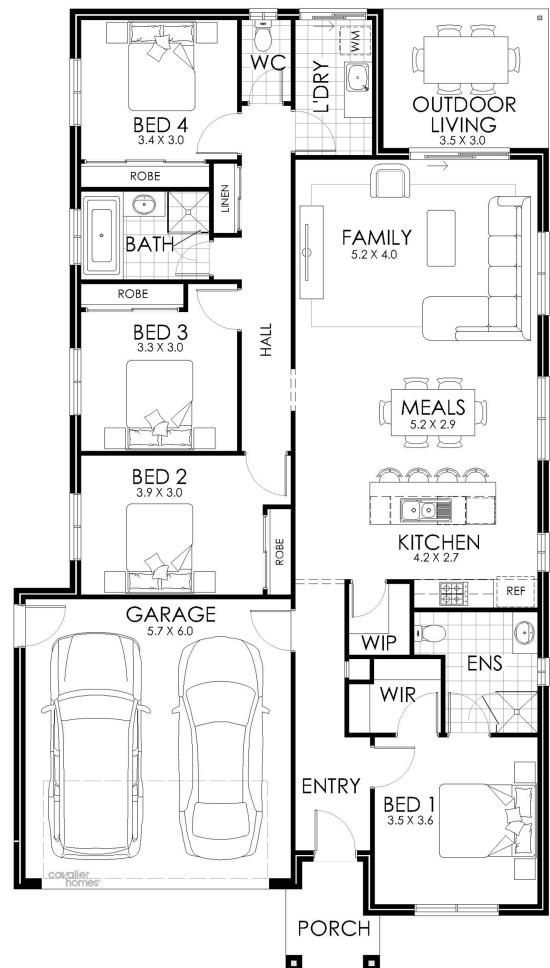
Lot 4 Rosler Parade Henty

Lot Size: 737m²

House Size: 207.91m²

List of Inclusions:

- Lifestyle Plus inclusions
- Colorbond steel roof
- Ducted Heating & Cooling
- 900mm stainless steel appliances
- Vinyl planks, carpet & tiles throughout
- Site Cost allowance
- Quantum Zero benchtops with 20mm edge detail
- Window coverings throughout
- Sought after estate
- Outdoor living area



**cavalier
homes**[®]
REAL HOMES.. REAL PEOPLE.

Find Out More

Contact Chris Hall
0499 566 005

*All prices, images, inclusions and plans shown in this document and any Display Home vary throughout Australia and over time and are provided as a guide only. Unless otherwise stated in writing, new home prices do not include furniture, decorator items, driveways, paths, landscaping, swimming pools, letterboxes, fencing, security systems, vacuum systems, telephone, intercom and communication systems, air conditioning, heating systems and or connection fees. All Cavalier Homes designs are copyright. None of the information provided in this brochure forms part of any contract with Cavalier Homes and you should not rely upon any information contained in this brochure in deciding whether to enter into any contract with Cavalier Homes. Please refer to the particulars of your Contract for the specific design and details of any inclusions. Package reference number 57472724114. Cavalier Homes Albury-Wodonga is a registered building practitioner number CDB-U 48509 (VIC) 184744C (NSW).