



## ASHLEY 22A

# House & Land Package



**\$950,348\***

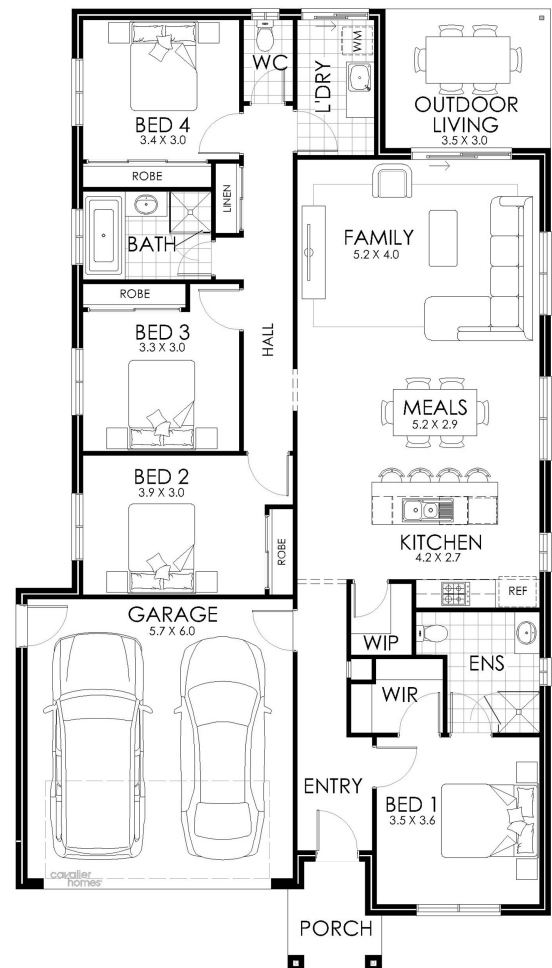
Lot 503 Eynesbury Street  
Buchanan

Lot Size: 572m<sup>2</sup>

House Size: 207.91m<sup>2</sup>

### List of Inclusions:

- Lifestyle inclusions
- Colorbond steel roof
- Ducted Heating & Cooling
- 600mm stainless steel appliances
- Carpet & tiles throughout
- Fixed site costs
- Colour selection appointment with interior design consultant
- Driveway and crossover allowance
- Energy efficient appliances
- Popular estate



**cavalier homes**<sup>®</sup>  
REAL HOMES.. REAL PEOPLE.

**Find Out More**

Contact Ben Heaft  
0477 745 158

\*All prices, images, inclusions and plans shown in this document and any Display Home vary throughout Australia and over time and are provided as a guide only. Unless otherwise stated in writing, new home prices do not include furniture, decorator items, driveways, paths, landscaping, swimming pools, letterboxes, fencing, security systems, vacuum systems, telephone, intercom and communication systems, air conditioning, heating systems and or connection fees. All Cavalier Homes designs are copyright. None of the information provided in this brochure forms part of any contract with Cavalier Homes and you should not rely upon any information contained in this brochure in deciding whether to enter into any contract with Cavalier Homes. Please refer to the particulars of your Contract for the specific design and details of any inclusions. Package reference number 45684527275. Cavalier Homes Greater Newcastle is a registered building practitioner number 33481BC (NSW).