



ASHLEY 28

House & Land Package



\$979,400*

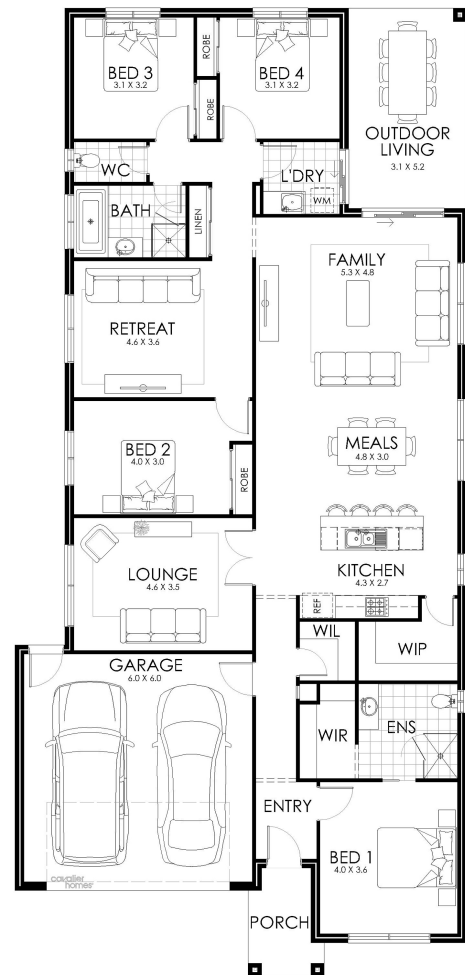
Lot 401 Coachwood Drive Lake Albert

Lot Size: 1502m²

House Size: 264.03m²

List of Inclusions:

- Lifestyle Plus inclusions
- Colorbond steel roof
- Ducted Heating & Cooling
- Quality Westinghouse appliances
- Vinyl planks, carpet & tiles throughout
- Allowance for site costs not included
- Lighting, window covering and finishing value packs included
- None
- None
- None



**cavalier
homes®**
REAL HOMES.. REAL PEOPLE.

Find Out More
Contact: Sophie Escott

*All prices, images, inclusions and plans shown in this document and any Display Home vary throughout Australia and over time and are provided as a guide only. Unless otherwise stated in writing, new home prices do not include furniture, decorator items, driveways, paths, landscaping, swimming pools, letterboxes, fencing, security systems, vacuum systems, telephone, intercom and communication systems, air conditioning, heating systems and or connection fees. All Cavalier Homes designs are copyright. None of the information provided in this brochure forms part of any contract with Cavalier Homes and you should not rely upon any information contained in this brochure in deciding whether to enter into any contract with Cavalier Homes. Please refer to the particulars of your Contract for the specific design and details of any inclusions. Package reference number 52654053406. Cavalier Homes Albury-Wodonga is a registered building practitioner number CDB-U 48509 (VIC) 184744C (NSW).