



BATHURST 25

House & Land Package



\$892,000*

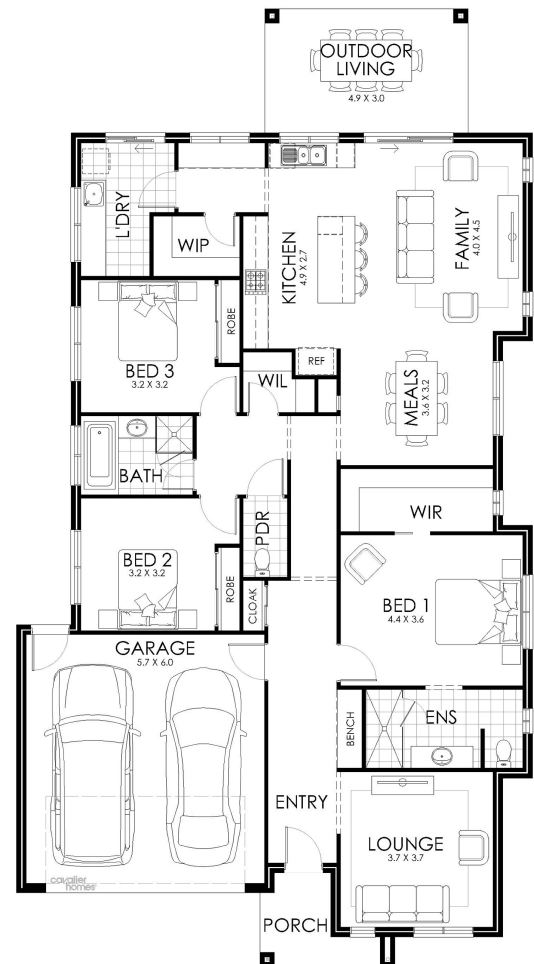
Lot 2 Hillcrest Avenue South
Nowra

Lot Size: 726m²

House Size: 231.34m²

List of Inclusions:

- Lifestyle inclusions
- Colorbond steel roof
- Ducted reverse cycle heating & cooling
- 600mm stainless steel appliances
- Allowance for floor coverings
- Site Cost allowance
- Quantum Zero benchtops with 20mm edge detail
- Haymes 3 coat paint system
- Sought after location
- Located close to schools and popular shopping destinations



**cavalier
homes**[®]
REAL HOMES.. REAL PEOPLE.

Find Out More

Contact: David Azzati
0492 856 493

*All prices, images, inclusions and plans shown in this document and any Display Home vary throughout Australia and over time and are provided as a guide only. Unless otherwise stated in writing, new home prices do not include furniture, decorator items, driveways, paths, landscaping, swimming pools, letterboxes, fencing, security systems, vacuum systems, telephone, intercom and communication systems, air conditioning, heating systems and or connection fees. All Cavalier Homes designs are copyright. None of the information provided in this brochure forms part of any contract with Cavalier Homes and you should not rely upon any information contained in this brochure in deciding whether to enter into any contract with Cavalier Homes. Please refer to the particulars of your Contract for the specific design and details of any inclusions. Package reference number 53424686149. Cavalier Homes Head Office is a registered building practitioner number Albury-Wodonga CDB-U 48509 (VIC) 184744C (NSW), Bendigo CDB-U 50034, Gold Coast QBC 131187 (QLD), Goulburn Valley CDB-U 51879 (VIC) 316535C (NSW), Greater Melbourne East DB-U 12645 (VIC), Greater Newcastle 334818C (NSW), Greater Tweed 373931C (NSW), Ipswich 1193610 (QLD), Hobart 191512508 (TAS), Melbourne South East CBD-U 67182 (VIC), Mildura CDB-U 64767 (VIC) 126181C (NSW), Orange 397899C (NSW), Shoalhaven 361070C (NSW), Toowoomba 1202352 (QLD).