



BATHURST 25

House & Land Package



\$928,953*

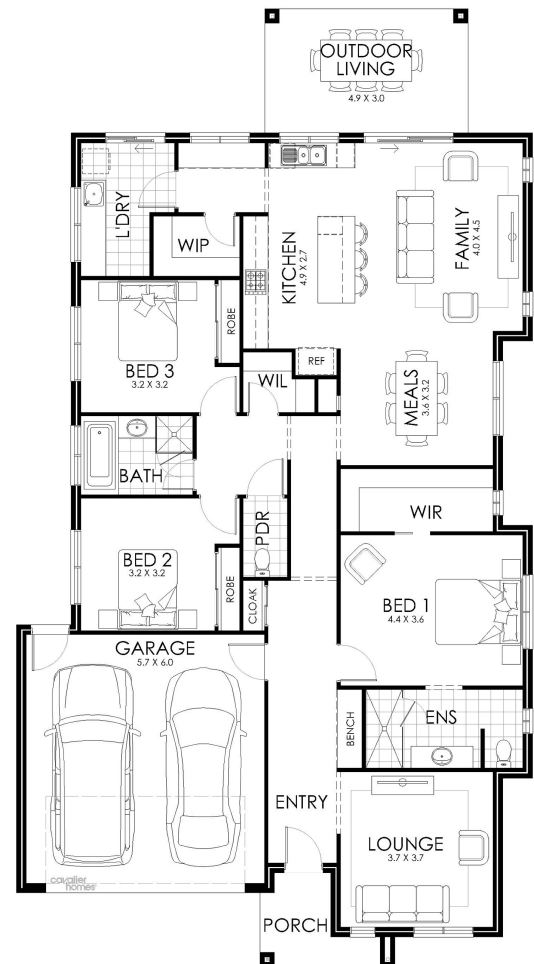
Lot 7 Solera Court Maiden Gully

Lot Size: 1500m²

House Size: 231.34m²

List of Inclusions:

- Aspire inclusions
- Colorbond steel roof
- Ducted reverse cycle heating & cooling
- Quality Westinghouse appliances
- Quality floor coverings
- Site Cost allowance
- Quality fittings and fixtures
- Solar PV system with inverter
- Generous sized block
- Located close to schools and popular shopping destinations



**cavalier
homes**[®]
REAL HOMES.. REAL PEOPLE.

Find Out More
Contact: Syrah Peterson
0439 234 350

*All prices, images, inclusions and plans shown in this document and any Display Home vary throughout Australia and over time and are provided as a guide only. Unless otherwise stated in writing, new home prices do not include furniture, decorator items, driveways, paths, landscaping, swimming pools, letterboxes, fencing, security systems, vacuum systems, telephone, intercom and communication systems, air conditioning, heating systems and or connection fees. All Cavalier Homes designs are copyright. None of the information provided in this brochure forms part of any contract with Cavalier Homes and you should not rely upon any information contained in this brochure in deciding whether to enter into any contract with Cavalier Homes. Please refer to the particulars of your Contract for the specific design and details of any inclusions. Package reference number 43573029710. Cavalier Homes Bendigo is a registered building practitioner number CDB-U 50034 (VIC).