



BELMONT 22A

House & Land Package



\$734,825*

Lot 8 Highview Terrace

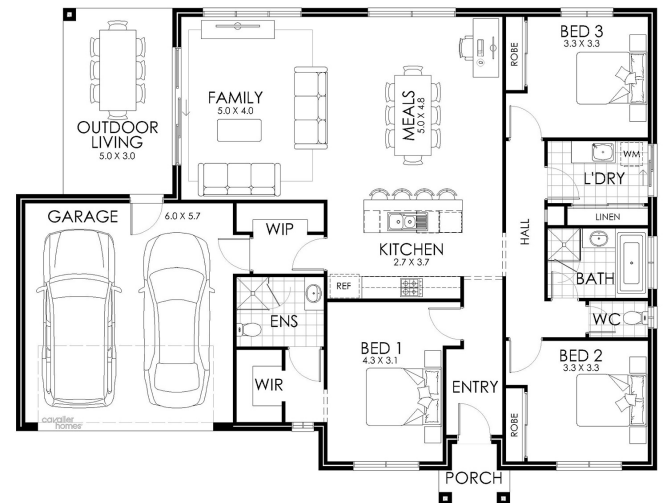
Kangaroo Flat

Lot Size: 769m²

House Size: 208.12m²

List of Inclusions:

- Lifestyle inclusions
- Colorbond steel roof
- Ducted reverse cycle heating & cooling
- 600mm stainless steel appliances
- Quality floor coverings
- Site Cost allowance
- Colour selection appointment with interior design consultant
- Brick over all window/door openings
- Energy efficient appliances
- Outdoor living area



**cavalier
homes**[®]
REAL HOMES.. REAL PEOPLE.

Find Out More

Contact Lisa Nankervis

0448 177 483

*All prices, images, inclusions and plans shown in this document and any Display Home vary throughout Australia and over time and are provided as a guide only. Unless otherwise stated in writing, new home prices do not include furniture, decorator items, driveways, paths, landscaping, swimming pools, letterboxes, fencing, security systems, vacuum systems, telephone, intercom and communication systems, air conditioning, heating systems and or connection fees. All Cavalier Homes designs are copyright. None of the information provided in this brochure forms part of any contract with Cavalier Homes and you should not rely upon any information contained in this brochure in deciding whether to enter into any contract with Cavalier Homes. Please refer to the particulars of your Contract for the specific design and details of any inclusions. Package reference number 53424686352. Cavalier Homes Bendigo is a registered building practitioner number CDB-U 50034 (VIC).