



BYRON 22B

House & Land Package



\$590,495*

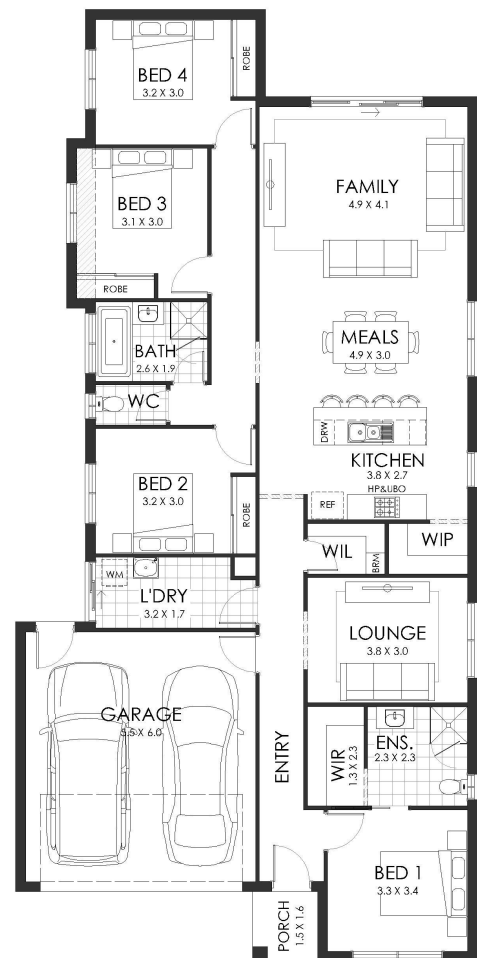
Lot 28 Cabernet Street Kialla

Lot Size: 749m²

House Size: 209.66m²

List of Inclusions:

- Fast keys inclusions
- Colorbond steel roof
- Gas Ducted Heating & Evaporative Cooling
- 600mm stainless steel appliances
- Carpet & tiles throughout
- Site Cost allowance
- Brick over all window/door openings
- Concrete paving allowance
- Located close to schools and popular shopping destinations
- Generous sized block



**cavalier
homes**[®]
REAL HOMES.. REAL PEOPLE.

Find Out More

Contact: Matthew
Mastroianni
0499 869 916