



BYRON 22B

House & Land Package



\$637,785*

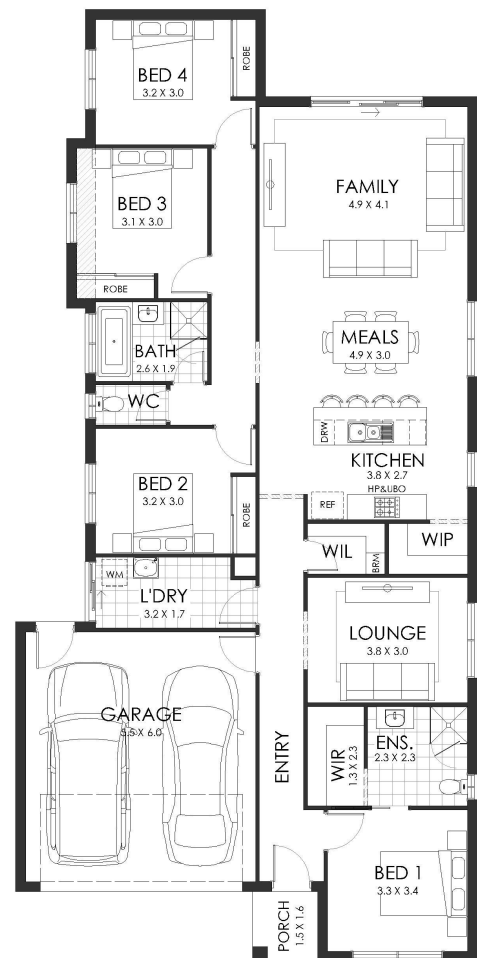
Lot 431 Sapling St Echuca

Lot Size: 640m²

House Size: 209.66m²

List of Inclusions:

- Fast keys inclusions
- Colorbond steel roof
- Reverse cycle split system
- 600mm stainless steel appliances
- Carpet & tiles throughout
- Site Cost allowance
- Brick over all window/door openings
- Concrete paving allowance
- Located close to schools and popular shopping destinations
- Popular estate



**cavalier
homes**[®]
REAL HOMES.. REAL PEOPLE.

Find Out More

Contact: Andre Dinardi
0457 366 230

*All prices, images, inclusions and plans shown in this document and any Display Home vary throughout Australia and over time and are provided as a guide only. Unless otherwise stated in writing, new home prices do not include furniture, decorator items, driveways, paths, landscaping, swimming pools, letterboxes, fencing, security systems, vacuum systems, telephone, intercom and communication systems, air conditioning, heating systems and or connection fees. All Cavalier Homes designs are copyright. None of the information provided in this brochure forms part of any contract with Cavalier Homes and you should not rely upon any information contained in this brochure in deciding whether to enter into any contract with Cavalier Homes. Please refer to the particulars of your Contract for the specific design and details of any inclusions. Package reference number 55974857251. Cavalier Homes Goulburn Valley is a registered building practitioner number CDB-U 51879 (VIC) 316535C (NSW).