



KIEWA 13A NG

House & Land Package

3  2  0 

\$640,000*

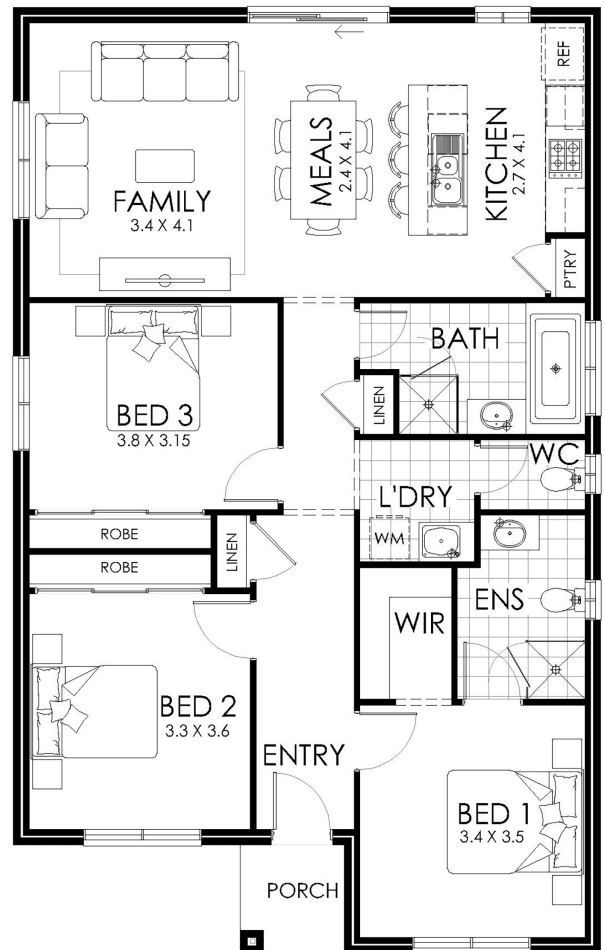
Lot 9 Spoonbill Crescent Sorell

Lot Size: 484m²

House Size: 121.70m²

List of Inclusions:

- Essentials inclusions – Hobart build area only
- Colorbond steel roof
- Reverse cycle split system
- 600mm stainless steel appliances
- Carpet & tiles throughout
- Earthworks for site fall of up to 300mm.
- Downlights to nominated areas
- Quality fittings and fixtures
- Sought after location
- Located close to town centre



**cavalier
homes**[®]
REAL HOMES.. REAL PEOPLE.

Find Out More

Contact Paula Atkinson
03 6240 6721

*All prices, images, inclusions and plans shown in this document and any Display Home vary throughout Australia and over time and are provided as a guide only. Unless otherwise stated in writing, new home prices do not include furniture, decorator items, driveways, paths, landscaping, swimming pools, letterboxes, fencing, security systems, vacuum systems, telephone, intercom and communication systems, air conditioning, heating systems and or connection fees. All Cavalier Homes designs are copyright. None of the information provided in this brochure forms part of any contract with Cavalier Homes and you should not rely upon any information contained in this brochure in deciding whether to enter into any contract with Cavalier Homes. Please refer to the particulars of your Contract for the specific design and details of any inclusions. Package reference number 29582840658. Cavalier Homes Hobart is a registered building practitioner number 191512508 (TAS).