



KIEWA 18

House & Land Package



\$1,048,139*

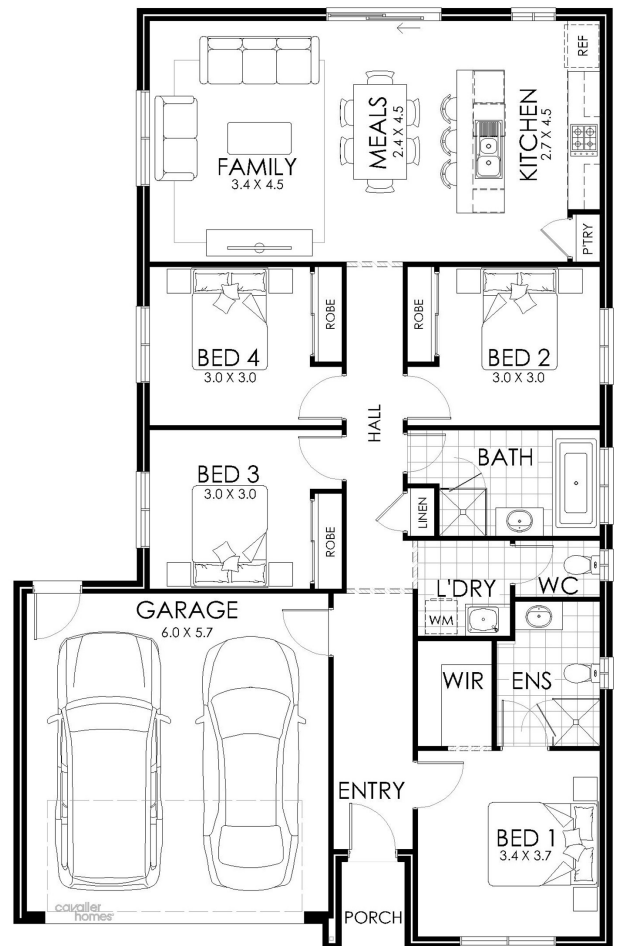
Lot 8 Fifty Bob Circuit Mount
Hutton

Lot Size: 362m²

House Size: 173.01m²

List of Inclusions:

- Aspire inclusions
- Colorbond steel roof
- Reverse cycle split system
- 600mm stainless steel appliances
- Allowance for floor coverings
- Site Cost allowance
- Haymes 3 coat paint system
- Driveway and crossover allowance
- Energy efficient appliances
- Sought after location



**cavalier
homes**[®]
REAL HOMES.. REAL PEOPLE.

Find Out More

Contact Ben Heaft
0477 745 158

*All prices, images, inclusions and plans shown in this document and any Display Home vary throughout Australia and over time and are provided as a guide only. Unless otherwise stated in writing, new home prices do not include furniture, decorator items, driveways, paths, landscaping, swimming pools, letterboxes, fencing, security systems, vacuum systems, telephone, intercom and communication systems, air conditioning, heating systems and or connection fees. All Cavalier Homes designs are copyright. None of the information provided in this brochure forms part of any contract with Cavalier Homes and you should not rely upon any information contained in this brochure in deciding whether to enter into any contract with Cavalier Homes. Please refer to the particulars of your Contract for the specific design and details of any inclusions. Package reference number 57951676175. Cavalier Homes Greater Newcastle is a registered building practitioner number 334818C (NSW).