



## LOGAN 28

# House & Land Package

4  2.5  2 

**\$1,243,311\***

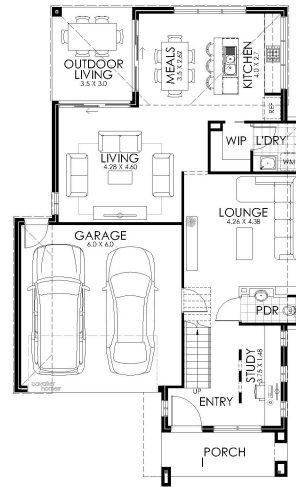
Lot 73 Greycliffe Ave Skye

Lot Size: 388m<sup>2</sup>

House Size: 266.64m<sup>2</sup>

List of Inclusions:

- Lifestyle inclusions
- Colorbond steel roof
- Ducted reverse cycle heating & cooling
- 900mm stainless steel appliances
- Hybrid flooring, carpet & tiles throughout
- Site Cost allowance
- Downlights throughout
- Quantum Zero benchtops with 20mm edge detail
- Outdoor living area
- Sought after location



**cavalier  
homes**<sup>®</sup>  
REAL HOMES.. REAL PEOPLE.

**Find Out More**

Contact Brianna Dyer  
0433 660 114

\*All prices, images, inclusions and plans shown in this document and any Display Home vary throughout Australia and over time and are provided as a guide only. Unless otherwise stated in writing, new home prices do not include furniture, decorator items, driveways, paths, landscaping, swimming pools, letterboxes, fencing, security systems, vacuum systems, telephone, intercom and communication systems, air conditioning, heating systems and or connection fees. All Cavalier Homes designs are copyright. None of the information provided in this brochure forms part of any contract with Cavalier Homes and you should not rely upon any information contained in this brochure in deciding whether to enter into any contract with Cavalier Homes. Please refer to the particulars of your Contract for the specific design and details of any inclusions. Package reference number 52385923745. Cavalier Homes Melbourne South East is a registered building practitioner number CBD-U 67182 (VIC).