



MALDON 22

House & Land Package



\$590,500*

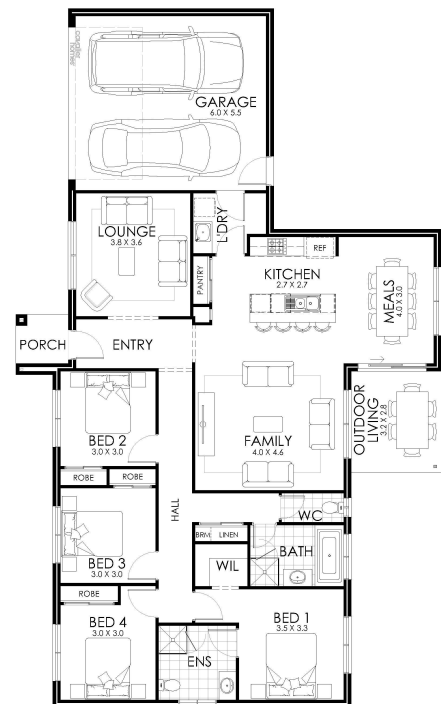
Lot 6 Midway Drive Gol Gol

Lot Size: 660m²

House Size: 209.73m²

List of Inclusions:

- Lifestyle inclusions
- Colorbond steel roof
- Ducted reverse cycle heating & cooling
- Quality Westinghouse appliances
- Laminate flooring to living areas
- Fixed site costs
- Customisable upgrade options available
- Downlights to living areas
- Located close to schools and popular shopping destinations
- *Pricing includes standard facade only



**cavalier
homes**[®]
REAL HOMES.. REAL PEOPLE.

Find Out More

Contact: Stephen Bates
0427 120 769

*All prices, images, inclusions and plans shown in this document and any Display Home vary throughout Australia and over time and are provided as a guide only. Unless otherwise stated in writing, new home prices do not include furniture, decorator items, driveways, paths, landscaping, swimming pools, letterboxes, fencing, security systems, vacuum systems, telephone, intercom and communication systems, air conditioning, heating systems and or connection fees. All Cavalier Homes designs are copyright. None of the information provided in this brochure forms part of any contract with Cavalier Homes and you should not rely upon any information contained in this brochure in deciding whether to enter into any contract with Cavalier Homes. Please refer to the particulars of your Contract for the specific design and details of any inclusions. Package reference number 53650600823. Cavalier Homes Mildura is a registered building practitioner number CDB-U 64767 (VIC) 126181C (NSW).