



## MARLBORO 2A

# House & Land Package



**\$673,395\***

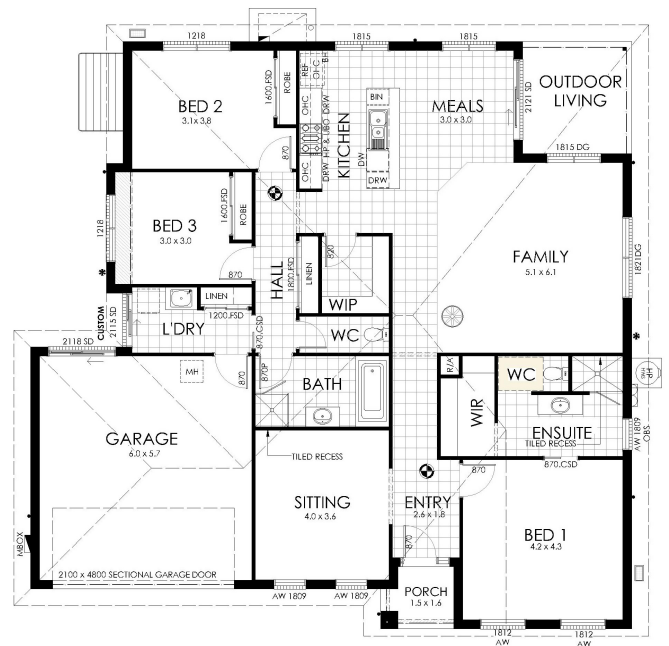
Lot 2A Marlboro Drive Kialla

Lot Size: 587m<sup>2</sup>

House Size: 225.39m<sup>2</sup>

List of Inclusions:

- Lifestyle inclusions
- Colorbond steel roof
- Ducted reverse cycle heating & cooling
- 900mm stainless steel appliances
- Carpet & tiles throughout
- Fixed site costs
- Downlights throughout
- Quantum Zero benchtops with 20mm edge detail
- Open plan living
- Located close to schools and popular shopping destinations



**cavalier  
homes**<sup>®</sup>  
REAL HOMES.. REAL PEOPLE.

Find Out More

Contact: Charley Daldy  
0417 268 156

\*All prices, images, inclusions and plans shown in this document and any Display Home vary throughout Australia and over time and are provided as a guide only. Unless otherwise stated in writing, new home prices do not include furniture, decorator items, driveways, paths, landscaping, swimming pools, letterboxes, fencing, security systems, vacuum systems, telephone, intercom and communication systems, air conditioning, heating systems and or connection fees. All Cavalier Homes designs are copyright. None of the information provided in this brochure forms part of any contract with Cavalier Homes and you should not rely upon any information contained in this brochure in deciding whether to enter into any contract with Cavalier Homes. Please refer to the particulars of your Contract for the specific design and details of any inclusions. Package reference number 50372190800. Cavalier Homes Goulburn Valley is a registered building practitioner number CDB-U 51879 (VIC) 316535C (NSW).