



PARKVIEW 31

House & Land Package



\$986,430*

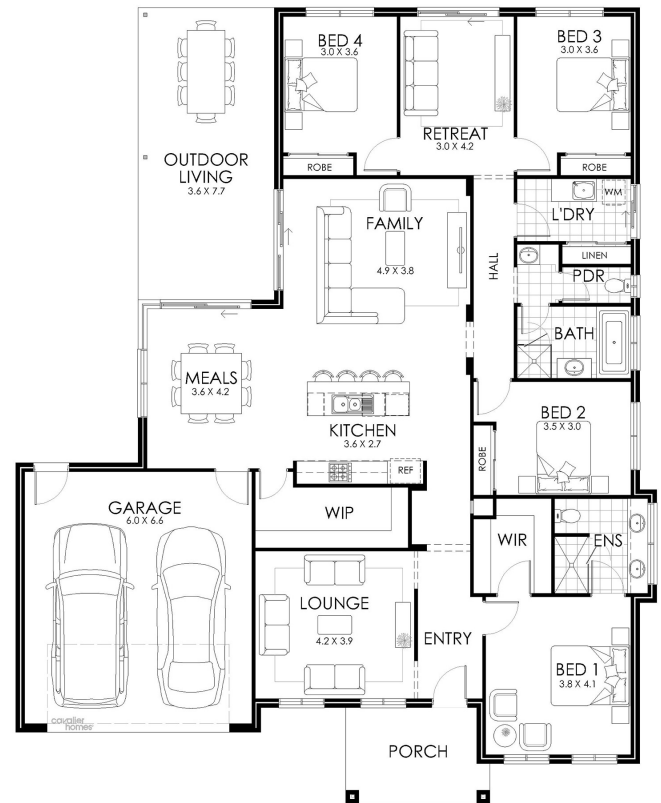
Lot 612 Whitewater Terrace
Thurgoona

Lot Size: 846m²

House Size: 287.56m²

List of Inclusions:

- Lifestyle Plus inclusions
- Colorbond steel roof
- Gas Ducted Heating & Evaporative Cooling
- Quality Westinghouse appliances
- Vinyl planks, carpet & tiles throughout
- Site Cost allowance
- Customisable upgrade options available
- Colour selection appointment with interior design consultant
- Additional living area
- Sought after location



**cavalier
homes**[®]
REAL HOMES.. REAL PEOPLE.

Find Out More

Contact: Zoe Turnbull
0499 566 007

*All prices, images, inclusions and plans shown in this document and any Display Home vary throughout Australia and over time and are provided as a guide only. Unless otherwise stated in writing, new home prices do not include furniture, decorator items, driveways, paths, landscaping, swimming pools, letterboxes, fencing, security systems, vacuum systems, telephone, intercom and communication systems, air conditioning, heating systems and or connection fees. All Cavalier Homes designs are copyright. None of the information provided in this brochure forms part of any contract with Cavalier Homes and you should not rely upon any information contained in this brochure in deciding whether to enter into any contract with Cavalier Homes. Please refer to the particulars of your Contract for the specific design and details of any inclusions. Package reference number 41009608604. Cavalier Homes Albury-Wodonga is a registered building practitioner number CDB-U 48509 (VIC) 184744C (NSW).