



## SANDOWN 26

# House & Land Package



**\$1,026,000\***

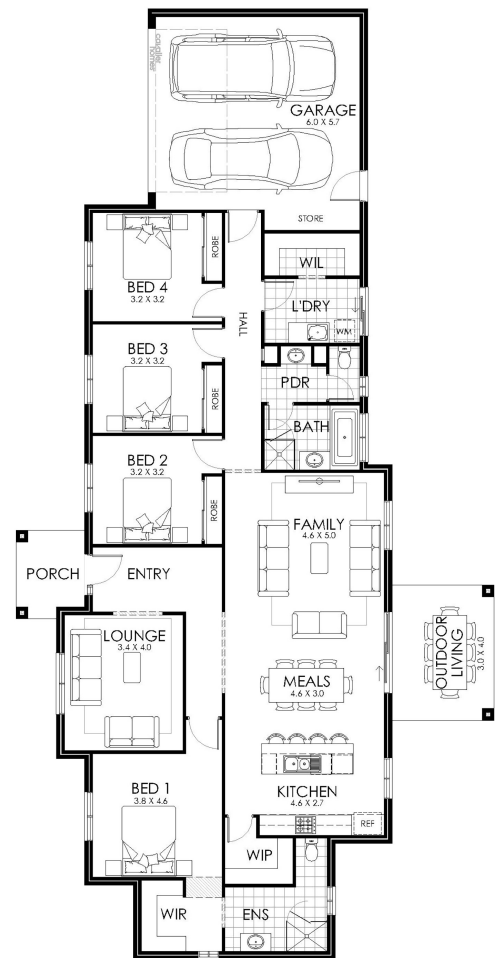
Lot 19 Thoroughbred Road  
Orierton

Lot Size: 10070m<sup>2</sup>

House Size: 245.27m<sup>2</sup>

List of Inclusions:

- Essentials inclusions - Hobart build area only
- Colorbond steel roof
- Reverse cycle split system
- 600mm stainless steel appliances
- Quality floor coverings
- Site Cost allowance
- Remote Garage Door
- Downlights to nominated areas
- Additional living area
- Outdoor living area



**cavalier  
homes**<sup>®</sup>  
REAL HOMES.. REAL PEOPLE.

Find Out More  
Contact Paula Atkinson  
03 6240 6721

\*All prices, images, inclusions and plans shown in this document and any Display Home vary throughout Australia and over time and are provided as a guide only. Unless otherwise stated in writing, new home prices do not include furniture, decorator items, driveways, paths, landscaping, swimming pools, letterboxes, fencing, security systems, vacuum systems, telephone, intercom and communication systems, air conditioning, heating systems and or connection fees. All Cavalier Homes designs are copyright. None of the information provided in this brochure forms part of any contract with Cavalier Homes and you should not rely upon any information contained in this brochure in deciding whether to enter into any contract with Cavalier Homes. Please refer to the particulars of your Contract for the specific design and details of any inclusions. Package reference number 33972542752. Cavalier Homes Hobart is a registered building practitioner number 191512508 (TAS).